



GMT MONTHLY MEMBERSHIP PROGRESS REPORT

Results as of: 5/31/2020

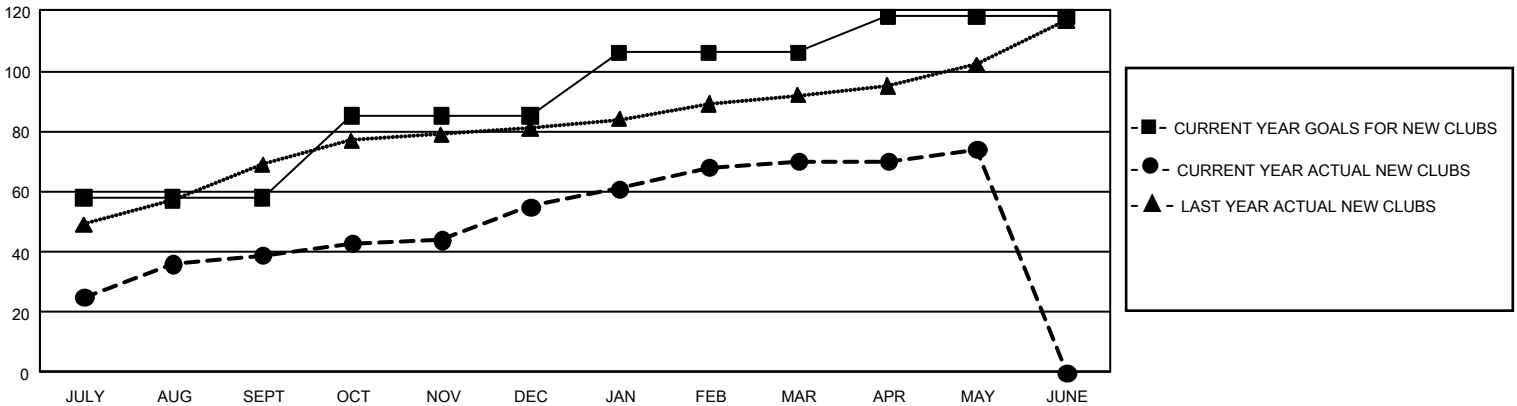
GMT Constitutional Area 6, Group K

GMT: OPEN

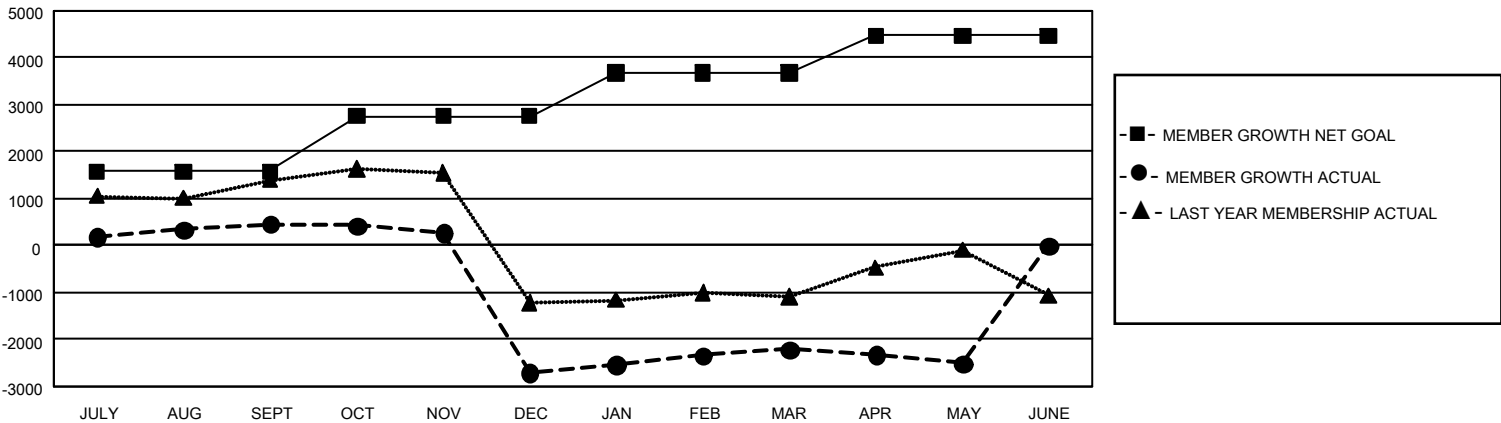
REPORT DOES NOT INCLUDE CLUBS IN UNDISTRICTED AREAS.

Clubs				Members			
RESULTS FOR 2019-2020				RESULTS FOR 2019-2020			
QUARTER	NEW CLUB GOAL	NEW CLUBS	DROPPED CLUBS	QUARTER	MEMBER GROWTH NET GOAL	MEMBER GROWTH ACTUAL	DROPPED MEMBERS ACTUAL (including transfers)
JULY/AUG/SEPT	174	39	13	JULY/AUG/SEPT	4,725	1,707	1,159
OCT/NOV/DEC	81	16	106	OCT/NOV/DEC	3,540	993	4,131
JAN/FEB/MAR	63	15	7	JAN/FEB/MAR	2,775	1,158	454
APR/MAY/JUNE	36	4	1	APR/MAY/JUNE	2,385	354	611

GOALS AND ACTUAL NEW CLUBS CUMULATIVE



GOALS AND ACTUAL MEMBERS CUMULATIVE



DROPPED CLUBS: 127	488 CLUBS OF 1,079 ADDED 1 OR MORE NEW MEMBERS	<u>GENDER DISTRIBUTION</u> MALE 24,862 (68.39%) FEMALE 11,493 (31.61%)
<u>DROPPED MEMBERS</u> DECEASED 80 CLUB CANCELLED 2,894 OTHER 3,382 <hr/> TOTAL 6,356	CLICK HERE FOR CUMULATIVE MEMBERSHIP DATA	TOTAL FAMILY UNIT MEMBERS 17,196 FAMILY MEMBERS PAYING HALF DUES 9,874